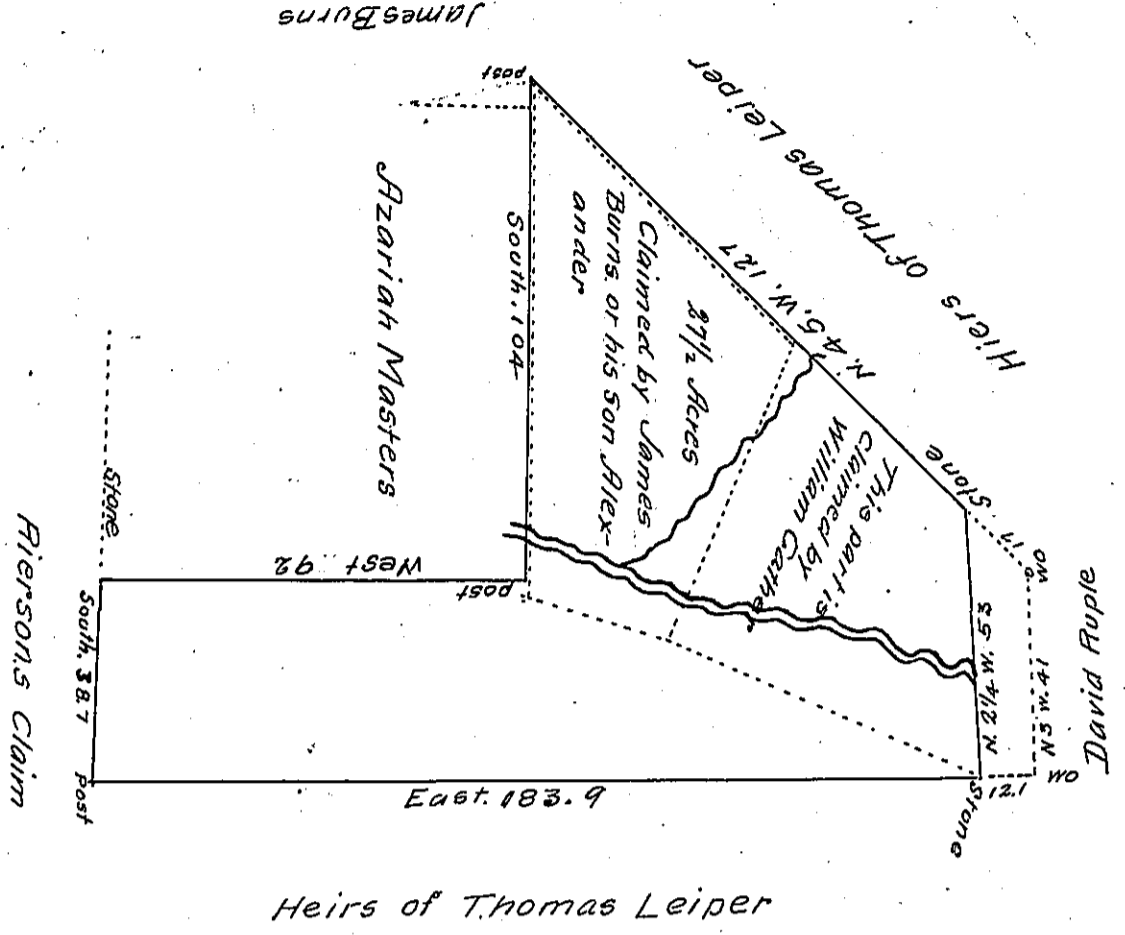


The East end of this Survey is claimed by William Gather who has a field cleared on it



The part included in the dotted lines is claimed by James Burns and the whole is said to be within what is called the Rierson survey or Claim See Alex: Burns, Draught

Surveyed 25<sup>th</sup> day of April 1831 in pursuance of a Warrant granted David Ruple bearing date the 26<sup>th</sup> day of November 1830 containing 73 Acres and 16 perches and allowance of Six per Cent for Roads &c. Situate on Crabapple—a branch of Wheeling Creek in Richhill Township in the County of Greene

John Fordyce D.S

To Jacob Spangler Esq  
Surveyor General of Pennsylvania

N.B. there are two pieces of land Cleared on the above survey  
But no settlement made I believe

IN TESTIMONY that the above is a copy of the original remaining on file in the Department of Internal Affairs of Pennsylvania, made conformably to an Act of Assembly approved the 16th day of February, 1833, I have hereunto set my Hand and caused the Seal of said Department to be affixed at Harrisburg, this tenth day of August 1906

*Leaac P. Brown*  
Secretary of Internal Affairs.